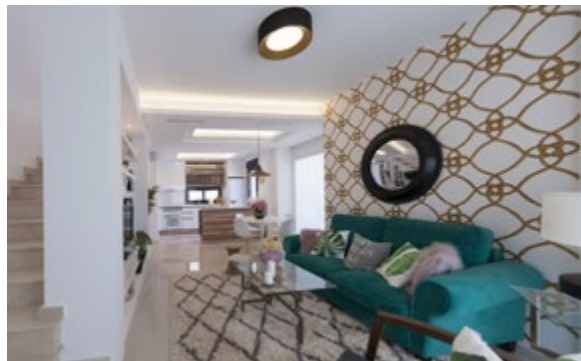
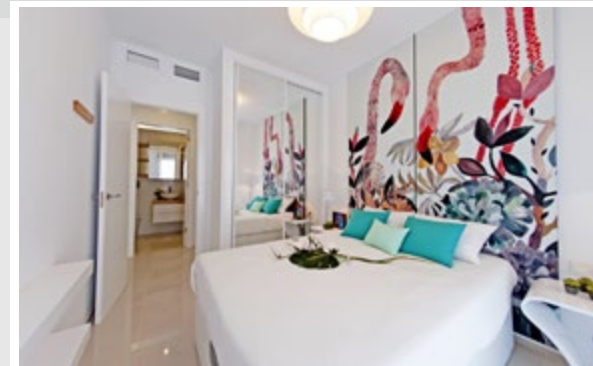
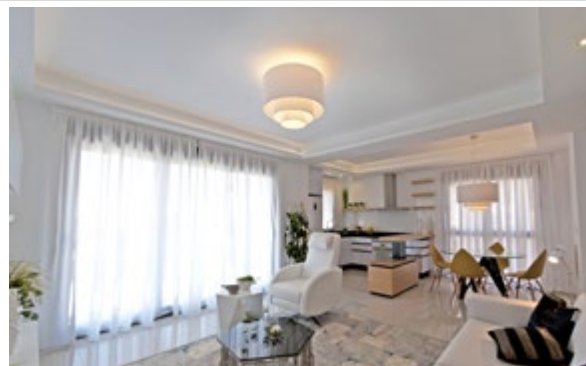


**NEW RESIDENTIAL ALLEGRA - Semi-Detached Villas**

Communal Swimming Pool Area, Private Parking, Gated Community.  
Each House with Private Garden and Roof Terrace facing the Swimming Pool



Model	Property	Terrace	Garden	Roof Terrace	Beds Baths	PRICE
nº 28 Samara Corner	100,6m <sup>2</sup>	2 Covered: 4,40m <sup>2</sup>	90m <sup>2</sup>	30m <sup>2</sup>	2+3	219.000€
nº 29 Samara Corner	100,6m <sup>2</sup>	2 Covered: 4,40m <sup>2</sup>	90m <sup>2</sup>	30m <sup>2</sup>	2+3	219.000€
nº 30 Samara Corner	100,6m <sup>2</sup>	2 Covered: 4,40m <sup>2</sup>	90m <sup>2</sup>	30m <sup>2</sup>	2+3	219.000€
nº 31 Samara Corner	100,6m <sup>2</sup>	2 Covered: 4,40m <sup>2</sup>	90m <sup>2</sup>	30m <sup>2</sup>	2+3	219.000€
nº 32 Samara Corner	100,6m <sup>2</sup>	2 Covered: 4,40m <sup>2</sup>	90m <sup>2</sup>	30m <sup>2</sup>	2+3	219.000€
nº 33 Samara Corner	100,6m <sup>2</sup>	2 Covered: 4,40m <sup>2</sup>	90m <sup>2</sup>	30m <sup>2</sup>	2+3	219.000€
nº34 Samra Corner	100,6m <sup>2</sup>	2	90m <sup>2</sup>	30m <sup>2</sup>	2+3	219.000€

**NEW RESIDENTIAL ALLEGRA: APARTMENTS WITH 2/3 BEDROOMS ON SALE**Swimming Pool Area, Private Parking, Gated Community.  
Each House with Private Garden

Model	m <sup>2</sup>	Terraces	Garden	Bedrooms	Bathrooms	PRICE
Nº 19 Olivos Garden	84m <sup>2</sup>	1	125m <sup>2</sup> Tiled: 22m <sup>2</sup>	2	2	194.000€
Nº21 Olivos Garden	89m <sup>2</sup>	1	125m <sup>2</sup> Tiled: 22m <sup>2</sup>	2	2	203.000€
Nº 7 Olivos Garden	89m <sup>2</sup>	1	130m <sup>2</sup>	2	2	207.000€
Nº 11 Olivos Garden	114,5m <sup>2</sup>	1	145m <sup>2</sup> Tiled: 22m <sup>2</sup>	3	2	245.000€
Nº 12b Olivos Garden	114,5m <sup>2</sup>	1	145m <sup>2</sup> Tiled: 22m <sup>2</sup>	3	2	245.000€

KEY READY IN  
FEBRUARY 2019

## NEW RESIDENTIAL ALLEGRA: APARTMENTS WITH 2/3 BEDROOMS ON SALE

Swimming Pool Area, Private Parking, Gated Community.  
Each House with Private Roof Terrace.



Model	m <sup>2</sup>	Terraces	Solarium	Bedrooms	Bathrooms	PRICE
Nº 22 Olivos Penthouse	89m <sup>2</sup>	1	73m <sup>2</sup>	2	2	205.000€

**NEW RESIDENTIAL ALLEGRA: TOWNHOUSES ON SALE**Swimming Pool Area, Private Parking, Gated Community.  
Each House with Private Garden and Roof Terrace.

Model	m <sup>2</sup>	Terraces	Garden	Solarium	Bedrooms	Bathrooms	PRICE
Nº 2 Ivory Corner	127,5m <sup>2</sup>	3 Tiled: 28m <sup>2</sup>	110m <sup>2</sup>	55m <sup>2</sup>	3	3	265.000€
Nº 5 Ivory Corner	127,5m <sup>2</sup>	3 Tiled: 28m <sup>2</sup>	130m <sup>2</sup>	55m <sup>2</sup>	3	3	265.000€
Nº 1 Ivory Corner	127,5m <sup>2</sup>	3 Tiled: 28m <sup>2</sup>	104m <sup>2</sup>	55m <sup>2</sup>	3	3	269.000€
Nº 6 Ivory Corner	127,5m <sup>2</sup>	3 Tiled: 28m <sup>2</sup>	168m <sup>2</sup>	55m <sup>2</sup>	3	3	277.000€
Nº 3 Ivory Corner	137,1m <sup>2</sup>	3 Tiled: 24m <sup>2</sup>	130m <sup>2</sup>	55m <sup>2</sup>	4	3	279.000€



**NEW RESIDENTIAL ALLEGRA: GARDEN APARTMENTS WITH 2/3 BEDROOMS**Swimming Pool Area, Private Parking, Gated Community.  
Each House with Private Garden From 65m<sup>2</sup>

Model	m <sup>2</sup>	Terraces	Garden	Bedrooms	Bathrooms	PRICE
Nº 86 Alba Garden	76,79m <sup>2</sup>	1	146m <sup>2</sup>	2	2	177.000€
Nº 89 Alba Garden	76,79m <sup>2</sup>	1	78m <sup>2</sup>	2	2	177.000€
Nº 105 Alba Garden	76,79m <sup>2</sup>	1	112m <sup>2</sup>	2	2	182.000€
Nº 110 Alba Garden	76,79m <sup>2</sup>	1	138m <sup>2</sup>	2	2	182.000€
Nº 95 Alba Garden	96,38m <sup>2</sup>	1	129m <sup>2</sup>	3	2	222.000€
Nº 87 Alba Garden	96,38m <sup>2</sup>	1	127m <sup>2</sup>	3	2	227.000€
Nº 103 Alba Garden	96,38m <sup>2</sup>	1	180m <sup>2</sup>	3	2	232.000€
Nº 88 Alba Garden	96,38m <sup>2</sup>	1	158m <sup>2</sup>	3	2	237.000€

KEY READY IN  
SEPTEMBER 2019

## NEW RESIDENTIAL ALLEGRA: PENTHOUSES WITH 2/3 BEDROOMS ON SALE

Swimming Pool Area, Private Parking, Gated Community.  
Each House with Private Roof Terrace from 50m<sup>2</sup>



Model	m <sup>2</sup>	Terraces	Solarium	Bedrooms	Bathrooms	PRICE
Nº 90 Alba Penthouse	82,01m <sup>2</sup>	1	50m <sup>2</sup>	2	2	199.000€
Nº 93 Alba Penthouse	82,01m <sup>2</sup>	1	50m <sup>2</sup>	2	2	199.000€
Nº 101 Alba Penthouse	82,01m <sup>2</sup>	1	50m <sup>2</sup>	2	2	204.000€
Nº 106 Alba Penthouse	82,01m <sup>2</sup>	1	50m <sup>2</sup>	2	2	204.000€
Nº 99 Alba Penthouse	103,41m <sup>2</sup>	1	75m <sup>2</sup>	3	2	248.000€
Nº 100 Alba Penthouse	103,41m <sup>2</sup>	1	75m <sup>2</sup>	3	2	248.000€
Nº 91 Alba Penthouse	103,41m <sup>2</sup>	1	75m <sup>2</sup>	3	2	253.000€
Nº 92 Alba Penthouse	103,41m <sup>2</sup>	1	75m <sup>2</sup>	3	2	253.000€